

**CERTIFIED LAND CORNER RECORDATION**

DESCRIPTION OF CORNER EVIDENCE FOUND, AND ORIGINAL RECORD (if known)

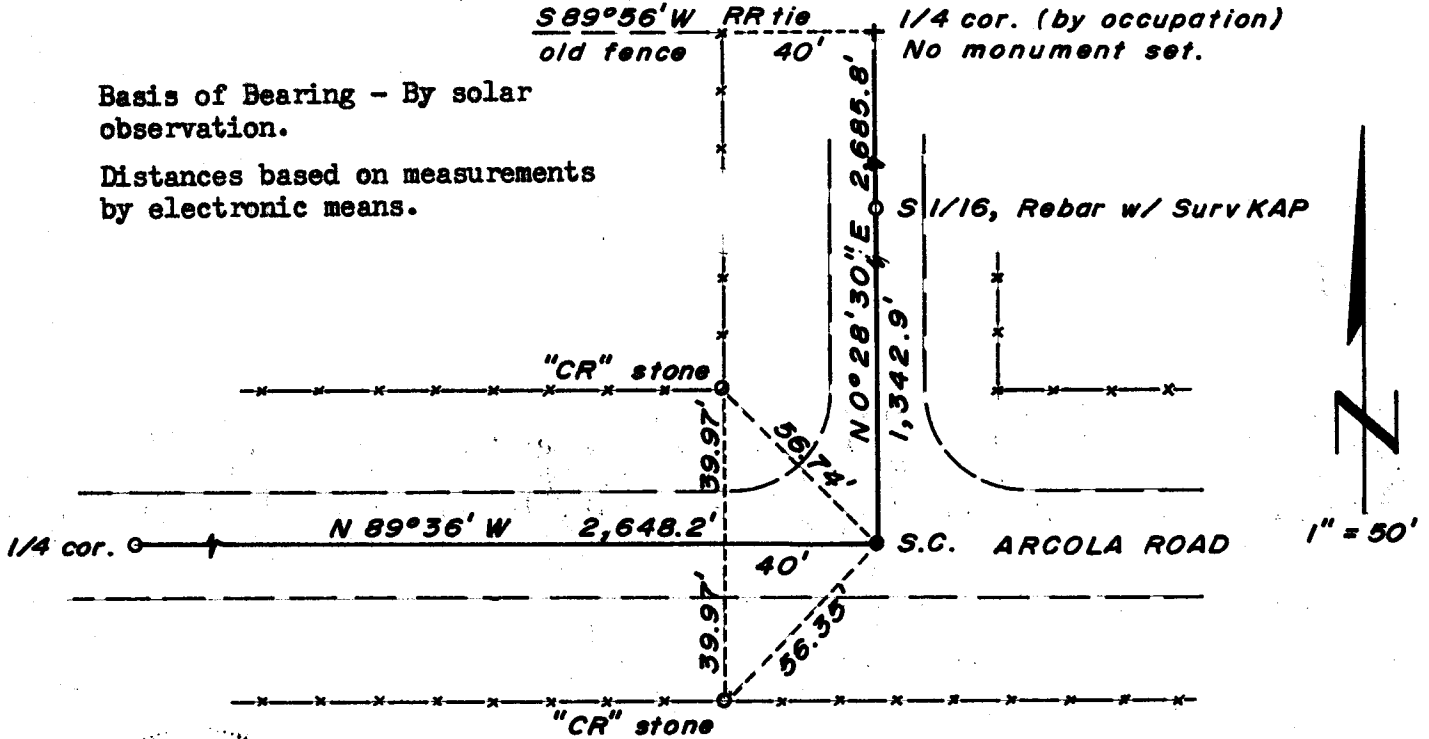
LOCATION Corner position determined from "CR" stones found as shown on sketch.  
 S. 9 S.10 "C R" stones set by Laramie County Surveyor.  
 S.16 S.15  
 T.13N., R.63W.  
 6th P.M.

DESCRIPTION OF MONUMENT AND ACCESSORIES ESTABLISHED TO PERPETUATE THE ORIGINAL LOCATION OF THIS CORNER:

At the corner: No monument set, corner falls in graded road.  
 Accessories: "C R" stone (granite boulder w/ ch. W C C R) bears N 44°49' W, 56.74 feet distant.  
 "C R" stone (granite boulder w/ ch. W C C R) bears S 45°13'30" W, 56.35 feet distant.

SKETCH, WITH COURSE AND DISTANCE TO ADJACENT CORNER IF DETERMINED IN THIS SURVEY.

(May Sketch or Paste Reproduction on Reverse Side.)



Basis of Bearing - By solar observation.

Distances based on measurements by electronic means.



I, R. L. Hudson, certify that I have carefully performed or reviewed the work done on the diagrammed corner as reported on this recordation form and approve the same.

Signature of Surveyor: R. L. Hudson Registration No. \_\_\_\_\_

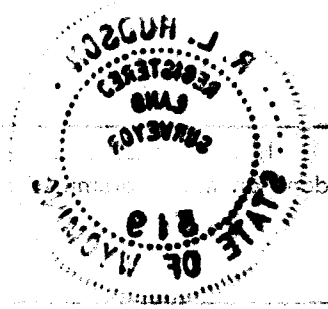
STATE OF WYOMING,  
 Office of Clerk and Recorder,  
 County of Laramie

This "corner record" was filed for record on the 29 day of December, 1975, was noted on the cross-index plat and is assigned page No. 4, in book No. filed

County Official: Janet C. Whitehead

Cross Index No. <u>J-13</u>	T. <u>13</u>	R. <u>63</u>	Mer.
_____	T. _____	R. _____	Mer.
_____	T. _____	R. _____	Mer.
_____	T. _____	R. _____	Mer.
_____	T. _____	R. _____	Mer.
_____	T. _____	R. _____	Mer.
_____	T. _____	R. _____	Mer.

REGISTERED LAND COUNTY RECORD



381759

Photographed

Indexed

Posted

Assessor

The State of Wyoming }  
County of Laramie } SS

This instrument was filed for record  
at 2:44 o'clock P. M. on the

29th day of April  
A. D. 19 25 and duly recorded in

book 111 on page 1011

*James C. McDaniel*

County Clerk & Ex-Officio Register & Deeds

By \_\_\_\_\_ Deputy